



**NIPPO USA INC.
COMPANY
PROFILE**

OVERVIEW OF NIPPO GROUP and its US OPERATION

Nippo's history as a pioneer in asphalt paving construction can be traced back in Japan more than 100 years, beginning in 1907 with the formation of Chugai Asphalt. Since its foundation in 1934, when Nippon Oil Co. and the Asano Bussan Co. merged their road departments to become Nippon Hodo Co., (Former name of Nippo) Nippo has continued business expansion as the number one paving company and HMA material producer in Japan.

With our headquarters located in Tokyo, Nippo Corporation alone employs more than 2,500 salaried workers in 11 main offices and more than 460 branch offices. The company operates more than 150 HMA plants scattered throughout Japan, producing more than 12 million tons of material each year. Our strategic network, developed in parallel with market demand, can deliver materials to virtually every major site around the country within one hour. With annual consolidated sales of approximately \$4 Billion (US), Nippo is widely recognized as an industry leader in Japan.

In recent decades, the company has expanded its line of business to meet growing market demands. While maintaining its venerable core of paving work, the company has diversified in the following areas: Architectural, Developmental, Environmental Solutions, Energy and Power, and Plant Engineering. In addition, Nippo has pursued strategic growth on an international level, gaining recognition for expertise in Automotive Proving Grounds and Test Courses. Since Nippo built Japan's first test track facilities in the 1950s, Japan's automakers have trusted the company with a more than 90 percent share of their test track construction business, a testament to Nippo's history of proven success in the field.

In 1998, Nippo USA Inc. was founded as a wholly owned subsidiary of Nippo Corp., with a focus on providing the very finest professional services in the field of Proving Ground and Test Track Engineering & Construction. Initially formed to assist Japanese auto manufacturers who wished to build North American facilities of the same quality as those used in Japan, Nippo USA Inc. has extended Nippo's global services network in to the full spectrum of the North American automotive market. Today, with a head office located in Michigan, Nippo USA Inc. has realized a steady growth in revenue, generating sales in excess of \$17 million in 2006.



COMPANY PROFILE - NIPPO GROUP

OUR HISTORY

- 1907** A private enterprise engaged in collecting and refining of natural asphalt was reorganized and named Chugai Asphalt Co. (the former organization of Nippon Hodo)
- 1918** The company was amalgamated by Hoden Oil Co. as its asphalt work department and same business was continued.
- 1921** Hoden Oil Co. was amalgamated by Nippon Oil Co. and our department became the asphalt department of Nippon Oil Co.
- 1924** Obtained the right of execution of a patented work method from Warren Brother's Co. of US.
- 1934** Nippon Hodo Co. was established by the amalgamation of the road department of Nippon Oil Co. and road department of the Asano Bussan Co.
- 1945** At the end of WW II, the company lost all of its overseas assets and restarted business in domestic market. Developed a method of earth bitumen pavements and put it into practical utilization.
- 1949** Stock listed on Tokyo Securities Market.
- 1953** Introduced asphalt finishers from the US. (first time in Japan)
- 1956** Introduced the Gussasphalt paving method from West Germany.
- 1963** New head office completed at the present location. (Kyobashi, Tokyo)
- 1976** Developed recycling base plant and started operation in Yokohama. Opened Class A architectural office.
- 1983** Capital increased to 5 billion Yen. (10 billion in 1989)
- 1997** Kanto Branch was awarded the Quality Standard Certification (ISO 9001) as the first winner of this status in road construction industry.
- 1998** Established Nippo USA Inc.
- 2001** Kanto Architectural Branch was established. Kanto Daiichi was awarded certification of ISO-14001
- 2002** Capital participation in Dai-Nippon Doboku Co.
- 2003** Merged with Nippon Oil Engineering Co. which became our Energy Business Division. The name of the company has been changed to Nippo Corporation.
- 2004** Nippo Corporation's head office was awarded Environmental Management Standard Certification of ISO 14001
- 2008** Nippo USA Inc. celebrated 10 years in the US



COMPANY PROFILE - NIPPO GROUP

PROFILE IN GLANCE – NIPPO CORPORATION

Corporate Name:	Nippo Corporation
Head Office:	1-19-11 Kyobashi, Chuo-ku, Tokyo JAPAN
Founded:	In 1907 as Chugai Asphalt Co.,Ltd. Incorporated February 2, 1934 as Nippon Hodo Co.,Ltd. Renamed to Nippo Corporation in 2003
Publicity traded	Since 1949 - Shares are listed on Tokyo Stock Exchange
Capital:	USD 150 million (as of April 2009)
Number of Employees:	2500 (Salaried, Nippo Corp. alone as of April 2009)
Consolidated Sales:	USD 4 billion (as of April 2009)
Diversified Portfolio:	<ul style="list-style-type: none"> • Paving, Civil Work - 50% (USD 2 billion) • Architecture - 18% (USD 700 million) • Plant Construction - 8 % (USD 300 million) • Product - 20% (USD 765 million) • Development and Others - 250 million
Net Work:	More than 450 Branch Offices
HMA Production:	12 million tons annually at over 150 Plants
WEB SITE	www. nippo-c.co.jp



Kansai International Airport

COMPANY PROFILE - NIPPO GROUP

GLOBAL STRATEGY

Nippo's overseas activities began as early as the 1930s in China and Taiwan. Since then, Nippo has displayed its "pioneering spirit" in the construction of highways, sporting facilities and automotive test tracks in Asia, America and Europe. Our proven track record of delivering successful projects to global clients has strengthened our reputation for adapting to foreign environments, while working effectively with local contractors and communities.

Equipped with the proper experience and an abundance of opportunity abroad, Nippo deliberately began seeking global expansion. In 2010, the company announced Nippo's business strategy to consider the international market as a key to our future growth. This strategy includes:

Automotive Proving Grounds and Test Tracks:

Nippo's global experience includes projects in 13 countries and 9 US states, as well as more than 90% of the domestic Japanese market. Nippo has gained international recognition for its unique and differentiated skills and expertise in this field.



Guam (US Territory):

Since 2001, Nippo's Guam operation has primarily focused on infrastructure projects. More recently, we have increased our local presence in response to growing demand of paving work expected by relocation of US marine stations from Okinawa. In 2009, Nippo set up a Hot Mix Asphalt plant capable of producing up to 180 tons of material per hour, allowing us to provide asphalt product throughout Guam.

ODA (Official Development Assistance):

Japan's ODA contributes to the peace and development of the international community. As an industry leader, we have greatly assisted developing countries through improvement of social infrastructure, providing superior engineering solutions meeting each region's specific need. Nippo group has a long history of providing construction services for ODA Projects in more than 20 countries.

Our move toward overseas expansion is in line with our motto "We challenge ourselves to achieve our dreams." and Nippo will continue to challenge the status quo through the pursuit of new markets and updated business models.

COMPANY PROFILE - NIPPO GROUP

GLOBAL EXPERIENCE – *Proving Grounds & Test Tracks*

1990	Toyota	USA - Arizona		High Speed Oval and Special Road (Supervision)
1991	Toyota	UK	Swindon	Test Track and Special Road (Supervision)
1995	Toyota	USA - Arizona		Specialty Roads (Supervision)
1996	Bridgestone	USA - Texas	Fort Stockton	Expansion Project (Supervision)
1997	Toyota	USA - Kentucky	Georgetown	Test Track Repair (Supervision)
1998	Toyota	USA - Indiana	Princeton	Test Track and Specialty Roads
1999	Toyota	France	Valenciennes	Test Track and Special Road (Supervision)
1999	Bridgestone	Italy	Rome	Test Track and Special Road (Supervision)
2002	GM	USA - Michigan	Milford	Low Coefficient of friction course (Design Build)
2003	Nissan	Mexico	Agua	Test Track and Special Road (Supervision)
2003	Toyota	Czech	Kolin	Test Track and Special Road (Supervision)
2004	Toyota	China	Tianjin	Test Track and Special Road (Supervision)
2005	Toyota	China	Guangzhou	Test Track and Special Road (Supervision)
2006	Aisin	USA - Michigan	Fowlerville	Low friction Road and Dynamic Pad (Construction)
2006	Nissan	USA - Tennessee	Smyrna	Test Track and Specialty Roads (Construction)
2006	Nissan	USA - Mississippi	Canton	Test Track and Specialty Roads (Construction)
2006	TRC	USA - Ohio	East Liberty	Low Coefficient of friction course and Skid Pad (Design Build)
2006	TRW	USA - Michigan	Lock Township	Low Coefficient of friction course (Construction)
2007	Bosch	USA - Michigan	Flat Rock	Low Coefficient of friction course (Design Build)
2007	Toyota	South Africa		Test Track and Specialty Roads (Supervision)
2007	Toyota	Canada	Woodstock	Test Track and Specialty Roads (Design Build)
2007	Toyota	USA - Texas	San Antonio	TestTrack Remediation (Design Build)
2007	Cheng-shin Tire	China	kunshan	HSO and Speciality Roads (Design + CM)
2008	Nissan	Russia	St.Petersburg	Test Track and Specialty Roads (Supervision)
2008	Toyota	Thailand	Bang Po	Test Track and Specialty Roads (Supervision)
2008	Toyota	India	Bangalore	Test Track and Specialty Roads (Supervision)
2008	Toyota	Belgium		High Speed Oval (Design)
2008	Honda	Indonesia	Jakarta	PT. Astra Honda Speciality Roads (Design and SV)
2009	Suzuki	India	Rohtak	HSO and Speciality Roads (Design)
2009	Nissan	India	Chennai	Test Track and Specialty Roads (Supervision)
2010	Toyota	USA - Kentucky	Georgetown	Test Track Resurfacing (Design Build)



COMPANY PROFILE - NIPPO USA INC.

PROFILE IN GLANCE – NIPPO USA INC.

Corporate Name:	Nippo USA Inc.
Head Office:	Novi, Michigan
Founded:	In February 6, 1998
Capital:	USD 750,000
	Wholly owned subsidiary of NIPPO CORPORATION

Nippo USA Inc. is a wholly owned subsidiary of Nippo Corporation, headquartered in Novi, Michigan. As a full service Construction / Engineering specialist, Nippo USA, Inc. provides cutting edge technology and solutions specially designed to meet the unique needs of Automotive Proving Grounds and Test Track projects. The company's presence in the US began in Ohio and expanded to Michigan, Arizona and other locations. Currently, Nippo USA Inc. is qualified to do business in 9 states and Guam.



Novi Office

42450 W. 12 Mile Rd. Suite 310
Novi MI 48377
TEL: 248-305-3300
FAX: 248-305-3301

In 2009, Nippo USA Inc. opened a branch office in Guam to further expand the construction services we have been bringing to the region since 2001. Our parent company's Hot Mix Asphalt plant in Guam allows us to meet the local needs of public and private clients for any size project. As a resident of the Guam, we are committed to offering the highest quality products and services.



Guam Office

290 Chalan Padiron Haya,
Route 15 Yigo, Guam 96929
TEL: 671-653-7077
FAX: 671-653-7707

COMPANY PROFILE - NIPPO USA INC.

CAPABILITY – Proving Grounds & Test Tracks

With over 50 years of experience in building Proving Grounds and Test Tracks, Nippo offers clients competitive products and services from initial concept through to project completion. The comprehensive services provided by Nippo USA Inc. include:

- Preliminary conceptual work (Concept Design, Scope Development, Budgeting, Scheduling, etc.)
- Detail designs
- Engineering
- Construction Management
- Prime (General) Contracting
- Field Supervision
- Consultant Service

With five decades of experience, Nippo recognizes that each project presents unique challenges. Nippo takes a unique, customized approach to each project, made possible by a rare combination of expertise in AE service and construction service. Nippo USA Inc. works in close collaboration with Nippo Corporation in Japan, sharing in-house intelligence and experience. Each project benefits from the experience of key team members who have proven records in all of the services we offer.



COMPANY PROFILE - NIPPO USA INC.

PROVING GROUNDS & TEST TRACKS – High Speed Oval



Japan Automotive Research Institute, Shirogane Test Center



COMPANY PROFILE - NIPPO USA INC.

PROVING GROUNDS & TEST TRACKS – Specialty Roads



Stone Block Road



Fixed Stone



Patched Asphalt Road



Wavy Road



Road Noise Road



Rough Road



Rope Road



Cracked Asphalt

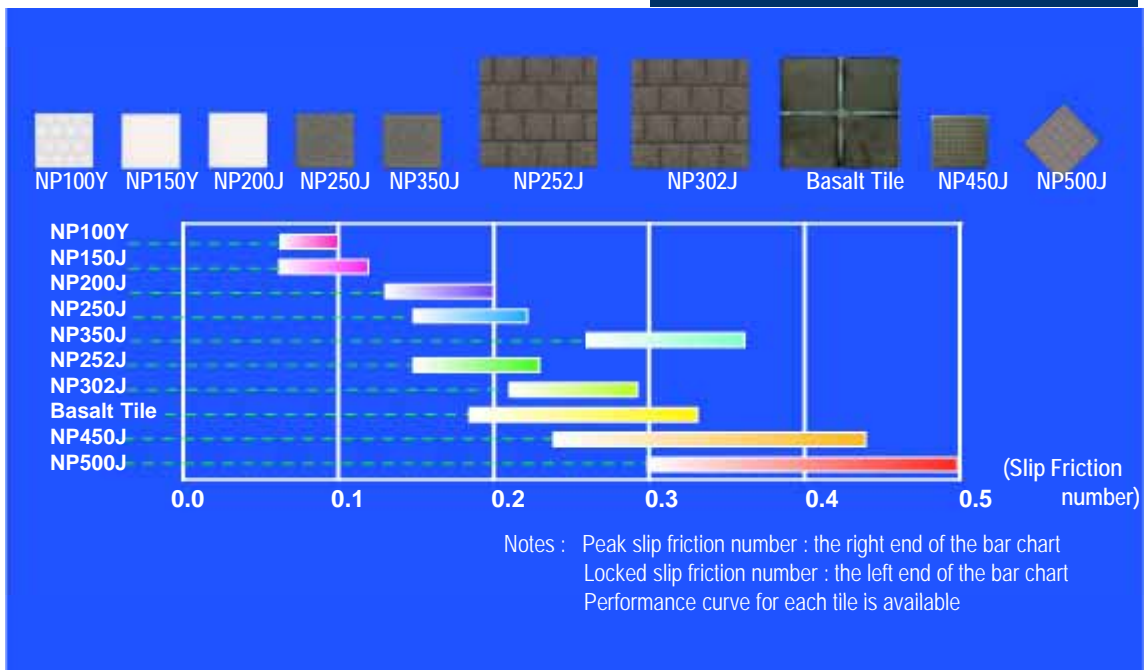


Pebble Asphalt Concrete

COMPANY PROFILE - NIPPO USA INC.

PROVING GROUNDS & TEST TRACKS – *Low co efficient friction courses*

NIPPO's Low friction tile line-up



NIPPO Nozzle



COMPANY PROFILE - NIPPO USA INC.

PROVING GROUNDS & TEST TRACKS – *Low co efficient friction courses*

NIPPO's Precast Panel



NIPPO USA INC. Project Profile





COMPANY PROFILE - NIPPO USA INC.

PROJECT EXPERIENCE – NIPPO USA INC.

Owner	Location	Service	Project Description	Year
<i>SIA</i>	Lafayette, IN	Construction	Low Coefficient of Friction Course	2000
<i>Honda</i>	Marysville, OH	Supervision	Asphalt Rough Road	2002
<i>NISSAN</i>	Stanfield, AZ	Survey	Preliminary Study for Highspeed Oval	2002
<i>GM</i>	Milford, MI	Design Build	Low Coefficient of Friction Course	2002
<i>Robert Bosch</i>	Flat rock, MI	Design Build	Ceramic Tile Replacement	2003
<i>NISSAN</i>	Aguas, Mexico	Construction	Highspeed Oval Reconstruction	2003
<i>SIA</i>	Lafayette, IN	Construction	Ceramic Tile Replacement	2003
<i>AISIN (AWA)</i>	Fowlerville, MI	Construction	Low Coefficient of Friction Course	2005
<i>Toyota</i>	San Antonio, TX	Supervision	TMMTX Test Track	2005
<i>Robert Bosch</i>	Flat rock, MI	Design Build	Ceramic Tile Replacement	2006
<i>AISIN (AWA)</i>	Fowlerville, MI	Construction	Skidpad	2006
<i>TRW</i>	Lock Township, MI	Construction	Low Coefficient of Friction Course	2006
<i>NISSAN</i>	Smyrna, TN	Construction	VES Test Track	2006
<i>NISSAN</i>	Canton, MS	Construction	VES Test Track	2006
<i>TRC (Honda)</i>	Eastliberty, OH	Design Build	Low Coefficient of Friction Course	2006
<i>Toyota</i>	Woodstock, ON	Design Build	TMMC2 Test Track	2007
<i>Toyota</i>	San Antonio, TX	Design Build	TMMTX Test Track Remediation	2007
<i>Toyota</i>	Princeton, IN	Design Build	TMMI Belgian Road Project	2008
<i>Toyota</i>	Blue Springs, MS	Design / Preconst.	TMMMS Test Track Project	2008
<i>Nissan(NTCNA)</i>	Stanfield, AZ	Preliminary Concept	NTCNA High speed Oval Project	2008
<i>Toyota</i>	Georgetown, KY	Design Build	TMMK Test Track Resurfacing Project	2010

PROJECT PROFILES - NIPPO USA INC.

Project Name: TMMC2 Test Track Construction
Owner: TEMA (Toyota Engineering & Motor Manufacturing NA, Inc.)
Project Location: Woodstock, Ontario CANADA
Project Value: \$6,000,000 (CAN\$)
Year Completed: July 2008

Scope of Work:

Nippo USA Inc. was selected to perform pre-construction, design and construction services for the new test track at Toyota Motor Manufacturing Canada Plant in Woodstock, Ontario. This was the first Construction Management project to be awarded to Nippo USA Inc. for Toyota's test track in the North American region. The scope of the work was to construct the main test track, fence, guiderail, electrical, specialty roads to include skid pad, stone pavement, sine wave, and rope road. In addition to the original contract, Nippo USA Inc. also performed the earthwork portion associated with unstable soil, which was an unexpected condition.

Nippo USA, Inc. adopted a unique project delivery method similar to design build approach, which best represented Toyota's interest in meeting the test track project's complex requirements. The project began in June of 2007. Paving work carried over to the following year in order to monitor the settlement process, and was completed on schedule in July 2008, prior to vehicle production start.



PROJECT PROFILES - NIPPO USA INC.

Project Name: TMMTX Test Track Remediation
Owner: TEMA (Toyota Engineering & Motor Manufacturing NA, Inc.)
Project Location: San Antonio, TX
Project Value: \$3,500,000
Year Completed: April 2008

Scope of Work:

The project was Nippo USA Inc.'s second Construction Management project and the first to be completed for Toyota in North America. The scope of the project was to perform pre-construction, design and construction services, for reconstruction of an existing test track located at Toyota Motor Manufacturing Texas in San Antonio, TX.

The overall project included separate phases for the secondary track and main track, so the test track could remain fully operational during construction. Nippo built the secondary track prior to reconstructing the main track. Separate subcontractors were selected for each track, to balance cost, performance and tolerance requirements. This remediation project required a high level of critical control during all phases of the project. Nippo USA Inc. utilized its vast experience in test track construction to achieve a successful design and construction meeting the highest standards of test track project.





PROJECT PROFILES - NIPPO USA INC.

Project Name: NNA VES Test Track Construction

Owner: Nissan North America Inc.

Project Location: Canton, MS Smyrna, TN

Project Value: \$9,400,000

Year Completed: October 2006

Scope of Work:

Nippo USA Inc. was awarded two separate bids for each location and contracted with lump sum amount, to reconstruct existing test tracks at existing Nissan plants in Smyrna, TN and Canton, MS. Work also included structural courses (road noise road, patched asphalt, twist road, Belgian block, etc.) built with exact same specifications as Nissan's test tracks in Japan.

Nippo provided preliminary conceptual service to the owner prior to the detail design and dispatched key personnel experienced in building test tracks for Nissan in Japan. The Smyrna work was completed in September 2006; Canton, in October 2006. Nippo met the extremely tight schedule and performed to the customer's satisfaction.

Intentionally Blank

PROJECT PROFILES - NIPPO USA INC.

Project Name: Fowlerville PG (Aisin) – Dynamic Pad

Owner: Aisin Holdings of America Inc.

Project Location: Fowlerville, Michigan

Project Value: \$2,800,000

Year Completed: September 2006

Scope of Work:

Nippo USA Inc. was awarded to construct a Dynamic Pad testing surface used to test a variety of vehicle performances. This project was Phase III of the Aisin (FTTA) Proving Ground, located at Fowlerville, Michigan.

A major challenge was the requirement for an extraordinarily tight tolerance for smoothness. With each of four pavement lifts designed to be smoother than the previous lift, this 1000 foot diameter, flat, level asphalt circle is one of the smoothest stretches of pavement in the US. The project began in April of 2006 and was completed within budget in September of 2006. The Nippo team effectively managed this project and met all requirements.



PROJECT PROFILES - NIPPO USA INC.

Project Name: Fowlerville PG (Aisin) – Road B (Tile Surfaces)

Owner: Aisin Holdings of America Inc.

Project Location: Fowlerville, Michigan

Project Value: \$3,300,000

Year Completed: September 2006

Scope of Work:

Nippo USA Inc. was the general contractor for construction of low coefficient of friction courses at the newly constructed Aisin (FTTA) Proving Ground in Fowlerville, Michigan. The scope of the work for this project was to construct two separate tile surfaces, each representing a different coefficient of friction.

To meet the desired coefficient of friction, Aisin selected ceramic tiles manufactured in Japan by Nippo for both tile surfaces. These surfaces simulate the characteristics of an icy roadway and snow-packed surface conditions and allow for testing of various brake systems and vehicle handling performance. This successful project also included a concrete base, fully automated wetting system, asphalt testing pad area and approach roadways.



NP200Y



NP250J

PROJECT PROFILES - NIPPO USA INC.

Project Name: TRW Locke Township PG Low Friction Surface

Owner: TRW Automotive

Project Location: Webberville, Michigan

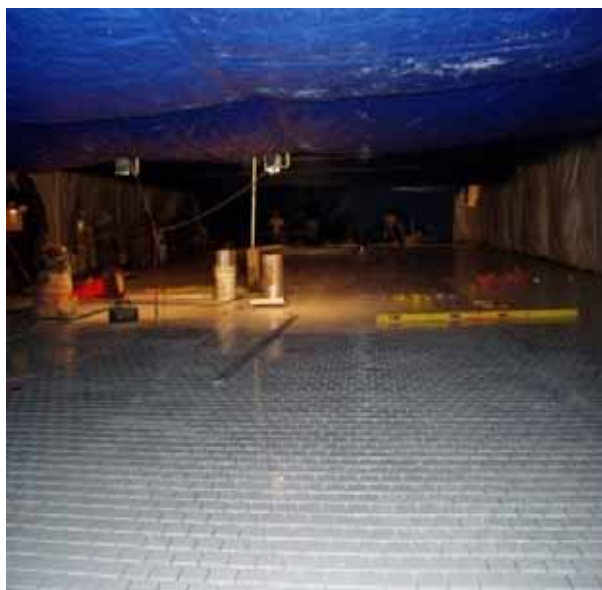
Project Value: \$2,500,000

Year Completed: December 2006

Scope of Work:

Nippo USA Inc. was subcontracted to perform the construction of a Low Friction Surface course at TRW Automotive Proving Grounds at Lock Township, Michigan.

Nippo USA Inc. provided construction services with design assistance services to install a ceramic tile surface and wetting system, including special spray nozzle heads developed by Nippo. This project's most notable challenge was a demand for accelerated completion, which required performing the tile work during the winter season. Nippo USA Inc. successfully responded to this challenge by utilizing a tent and heater system to maintain a suitable temperature for tile installation. The project commenced in July 2006 and was completed on December 2006, successfully meeting the project's complex requirements within the budget and given time frame.



PROJECT PROFILES - NIPPO USA INC.

Project Name: GM Low Coefficient of Friction Test Surfaces

Owner: General Motors

Project Location: Milford, Michigan

Project Value: \$9,800,000

Year Completed: November 2004

Scope of Work:

Nippo USA Inc.'s first design build project in the US, awarded in August 2002, was reconstruction of low coefficient of friction course at the GM Proving Ground in Milford, Michigan. The surfaces were to include ceramic tile (straightaway section) and basalt tile (fan-shaped and traction hill) for the purpose of testing ABS and TRC systems and vehicle handling performance. Work also included the wash-off area, wetting system and electrical.

To meet the desired coefficient of friction, GM selected ceramic tile manufactured in Japan by Nippo for the straightaway, and basalt tile imported from Czechoslovakia in other sections. To achieve super flatness and durability, Nippo introduced a unique utilization of precast concrete panels, with the tiles affixed to them. These were manufactured locally for all three areas under Nippo's strict inspection and supervision. Precast panels were carefully placed on top of a concrete cast-in-place slab within the test area. Precast threaded metal fittings in each corner extend through the precast and rest on the cast-in-place slab for exact height adjustments, to ensure smoothness between panels. The Nippo team effectively managed this project to the customer's satisfaction.





PROJECT PROFILES - NIPPO USA INC.

Project Name: Bosch PG Tile Replacement

Owner: Bosch Corporation

Project Location: Flat Rock, Michigan

Project Value: \$640,000

Year Completed: September 2003

Scope of Work:

Nippo USA Inc. was prime contractor for the reconstruction of Low Coefficient of Friction Surfaces for Bosch Proving Ground in Flat Rock, Michigan.

The project involved reconstruction of the Basalt Tile surface and replacing the Ceramic Tile surface with tiles manufactured in Japan by Nippo. The general contract scope included removal of existing tile, mortar bed, concrete milling and installation of new tile surface and trench drain.

The Ceramic Tile section was completed in 2002 and the Basalt Alternate section in 2003.

Intentionally Blank



The Nippo Group is determined to provide our clients with the very finest services worldwide, cultivating a long-term relationship built upon trust.



Above is the kanji character meaning “ road ” which is the foundation of our logo.